

Ersatzteilliste

Artikelnummer:

217709, 217710, 245420

Sprachen:

**hu, tr, cz, es, sk, sv, ru, ro, pt, pl, no, nl, lt, lv, hr, it, el, fr, fi, en, de, da,
bg**

Angle Grinder - 3 601 G9E 800 - BAG 125-2 1300 W

Art. Nr 217710 / 217709

Item	Part Number	Description	Illustration	Price	Quantity	Price Group
3/13	2 600 905 072	Deep-Groove Ball Bearing 7x19x6	1	-,-	1	19
4	1 607 200 256	Switch	1	-,-	1	24
6	1 600 703 04D	Grommet	1	-,-	1	11
7	1 601 302 017	Fastening Clamp	1	-,-	1	10
9	1 601 11C 0A8	Manufacturer's nameplate BAG 125-2	1	-,-	1	13
21/14	1 600 905 032	Deep-Groove Ball Bearing 8x22x7	1	-,-	1	18
21/27	1 600 206 025	Rubber Ring	1	-,-	1	12
21/30	1 600 591 05N	Air Distributor	1	-,-	1	12
21/40	1 600 119 011	Spring retaining ring	1	-,-	1	11
21/41	1 600 200 029	Plain bearing	1	-,-	1	14
24	1 605 500 29G	Cover	1	-,-	1	12
25	1 605 500 29H	Housing Cover	1	-,-	1	22
28/32	1 603 523 110	Grinding Spindle M14, SW17	1	-,-	1	20
28/80	3 600 150 021	Sealing disk	1	-,-	1	13
29	1 600 591 047	Air-Deflector Ring	1	-,-	1	12
31	1 605 500 277	Brush-Cover	1	-,-	2	12
33	1 600 210 035	O-Ring 46,0x1,1 MM	1	-,-	1	11
35	1 600 136 013	Shim 0,1 MM THICK	1	-,-	1	13
35	1 600 136 014	Shim 0,2 MM THICK	1	-,-	1	13
35	1 600 136 015	Shim 0,3 MM THICK	1	-,-	1	13
35	1 600 136 020	Shim 0,15 MM THICK	1	-,-	1	13
45	1 603 300 016	Hex Nut M7, SW10	1	-,-	1	11
49	2 914 491 410	Thread-forming tap. Screw M4x16	1	-,-	4	10
50	2 603 490 023	Torx Oval-Head Screw 4x20	1	-,-	1	10
53	1 603 435 078	Torx Oval-Head Screw	1	-,-	3	10
54	1 603 414 026	Torx Oval-Head Screw 4x30	1	-,-	1	10
55	2 603 490 021	Torx Oval-Head Screw 4x12	1	-,-	3	10
108	1 600 712 030	Insulating Part	1	-,-	2	11
301/1	1 605 108 2BP	Motor Housing	1	-,-	1	28
301/17	1 604 652 021	Spiral Spring	1	-,-	2	10
301/18	1 600 A00 717	Switch Handle	1	-,-	1	12
301/19	1 604 611 031	Compression Spring	1	-,-	1	13
301/20	1 602 319 025	Adjusting Slide	1	-,-	1	12

Item	Part Number	Description	Illustration	Price	Quantity	Price Group
301/48	1 613 435 034	Lens Head Screw 3x10 ST	1	-,-	2	10
302/104	1 600 210 044	O-Ring 4,5x1,0 MM BLUE	1	-,-	1	10
343	1 607 000 742	Catch Lever	1	-,-	1	20
343/44	1 604 611 042	Compression Spring	1	-,-	1	10
650/1	1 602 025 058	Auxiliary Handle M10	2	-,-	1	31
650/2	1 603 345 043	Round Nut M14	2	-,-	1	23
650/3	1 607 950 052	Pin-Type Face-Wrench	2	-,-	1	15
650/5	2 605 703 014	Clamping-Flange Ø22,3xØ42 MM	2	-,-	1	20
650/5/2	1 600 210 055	O-Ring 20,35x1,78 MM	2	-,-	1	-
651	1 605 510 356	Protective Cover Ø125 MM	2	-,-	1	28
802	1 604 220 52Z	Field assembly 230V	1	-,-	1	33
803	1 607 000 V33	Armature With Fan 230V	1	-,-	1	42
805	1 607 000 392	Power supply cord EU 4,15m 2 x 1,0mm H07 RN-F	1	-,-	1	30
808	1 601 11A 1HZ	Nameplate	1	-,-	1	-
810	1 607 000 V37	Carbon-Brush Set	1	-,-	1	26
813	1 607 000 V38	Deep-Groove Ball Bearing	1	-,-	1	20
816	1 607 000 V43	Brush Holder	1	-,-	1	15
818	1 607 000 V42	Pan head screw	1	-,-	1	10
821	1 605 806 59E	Gear Housing	1	-,-	1	-
828	1 607 000 448	Bearing Flange	1	-,-	1	26
828/04	1 600 210 035	O-Ring 46,0x1,1 MM	1	-,-	1	11
835	1 606 610 132	Fan	1	-,-	1	12
838	1 607 000 V44	Set Of Gearwheels	1	-,-	1	31
840	1 600 A00 72B	Push-Button	1	-,-	1	14
851	1 607 233 472	Speed governor	1	-,-	1	37
896	1 603 340 027	Fast Locking Flange M14, SDS-CLIC	2	-,-	1	39

Illustration - Type E

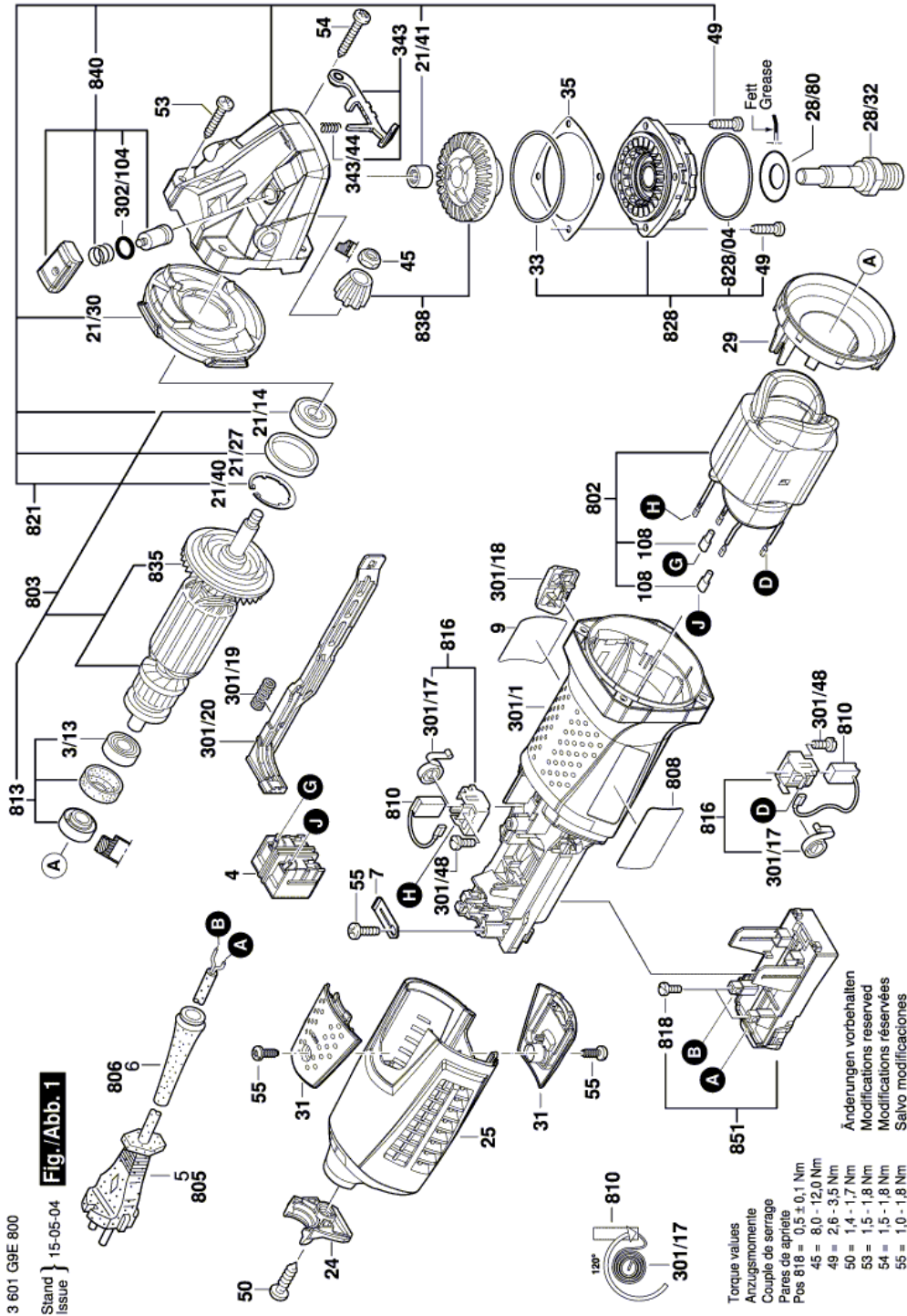
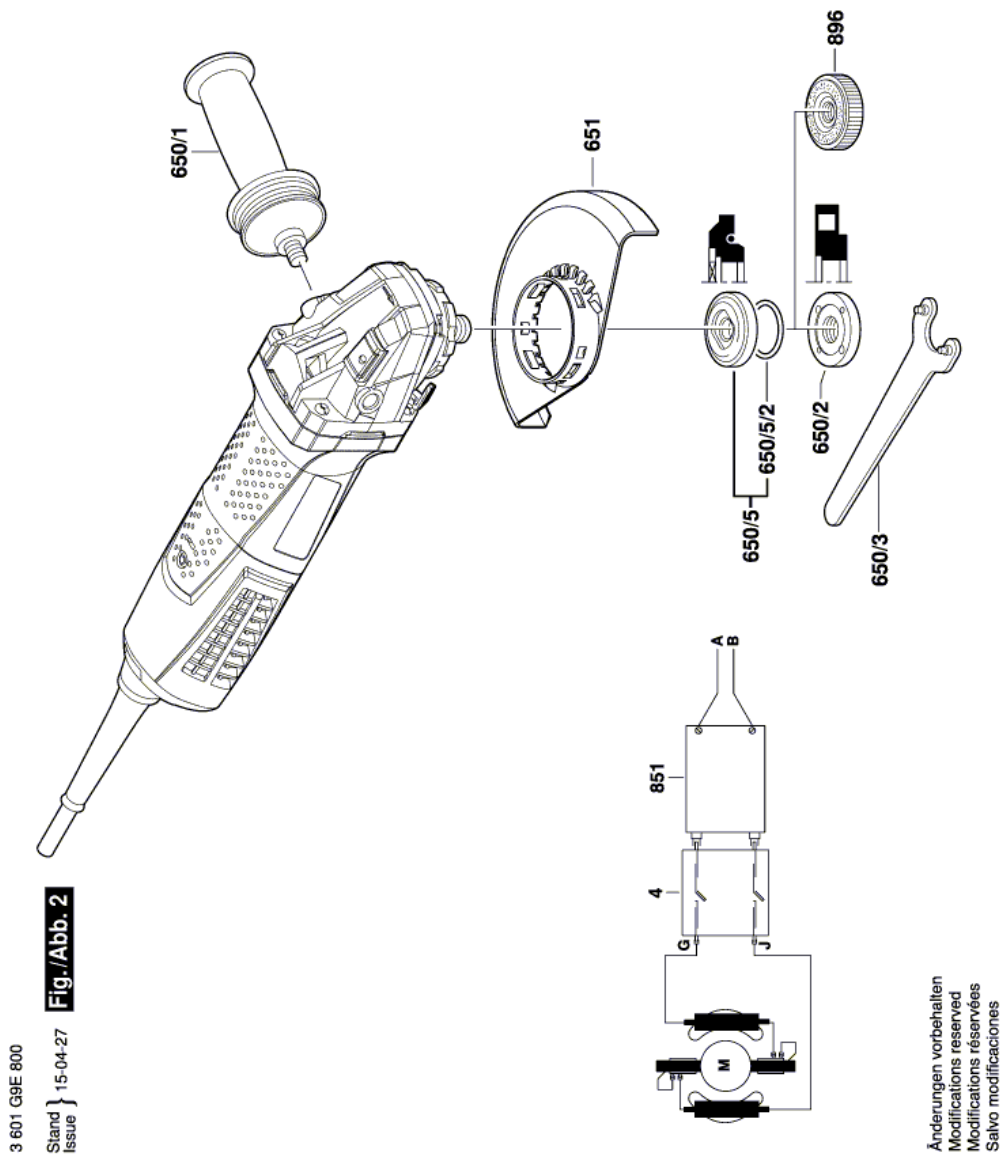


Illustration - Type E



3 601 G9E 800

Stand } 15-04-27 **Fig./Abb. 2**
Issue }

Änderungen vorbehalten
Modifications reserved
Modifications réservées
Salvo modificaciones

Information subject to change without further notice.